

APPROXIMATE  
PROPERTY BOUNDARY  
LATITUDE: 28° 22' 36.442"  
LONGITUDE: -81° 14' 44.382"



Scale: 1" = 2,000'  
Date: 4/12/2017  
Photo Date: 2015  
Project No. B17201  
Biologist: AED GIS: RCO



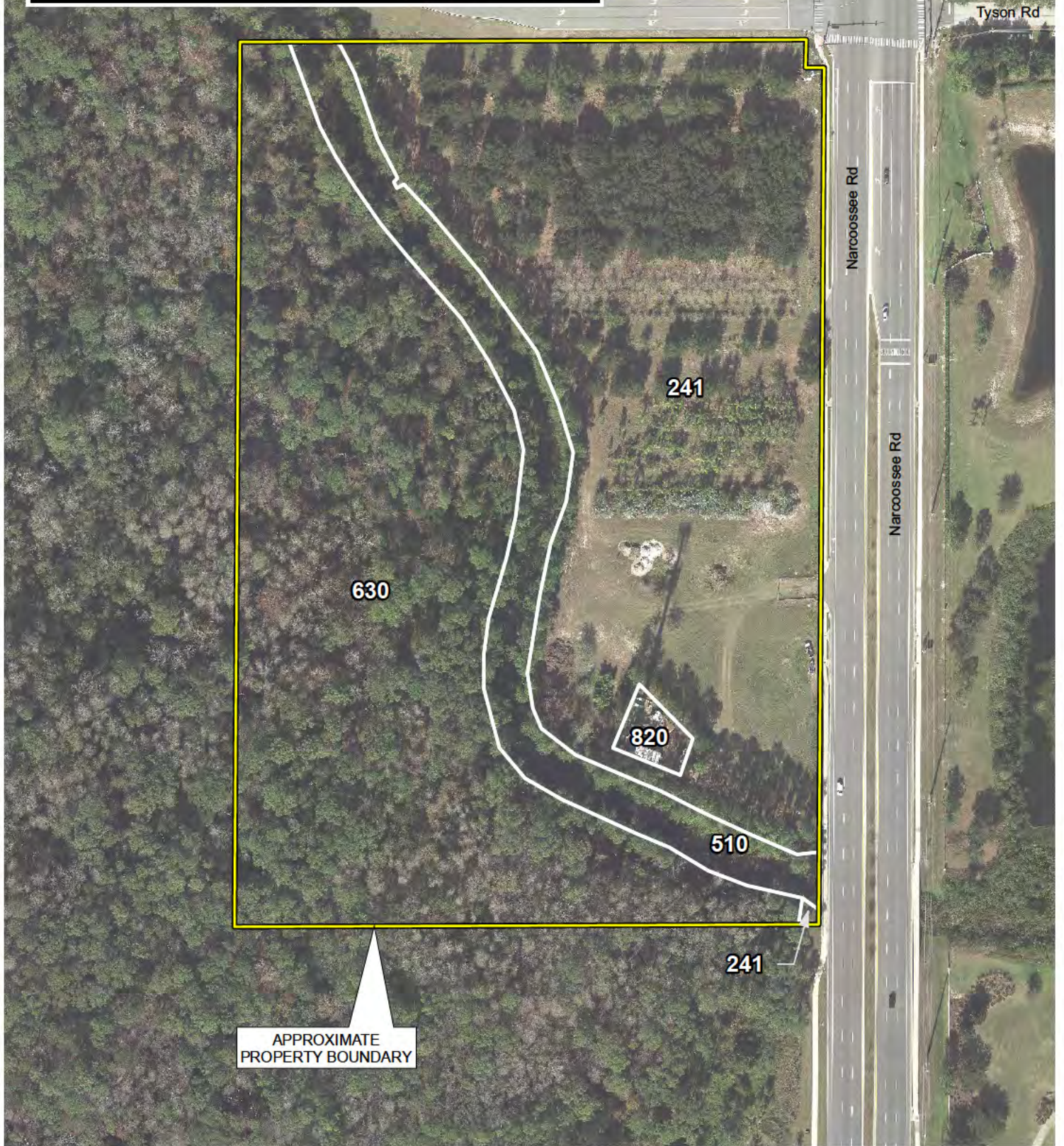
USGS MAP - MARCOOSSEE NW 3610  
SHOPPES AT NONA PLACE  
SECTION 30, TOWNSHIP 24 SOUTH, RANGE 31 EAST  
COUNTY, FLORIDA

FIGURE  
2



FLUCFCS		APPROXIMATE PERCENT	
CODE*	FLUCFCS CLASSIFICATION	ACREAGE	OF SITE
241	TREE NURSERY	6.87	46.96%
510	CANAL	1.42	9.71%
630	WETLAND FORESTED MIXED	6.22	42.52%
820	COMMUNICATIONS (CELL TOWER)	0.12	0.82%

\*Florida Land Use, Cover and Forms Classification System (FDOT 1999)



APPROXIMATE  
PROPERTY BOUNDARY

Path: P:\B17201\ERP\1\FLUCFCS.mxd



Scale: 1" = 150'  
 Date: 4/13/2017  
 Photo Date: 2016  
 Project No. B17201  
 Biologist: AED GIS: RCO

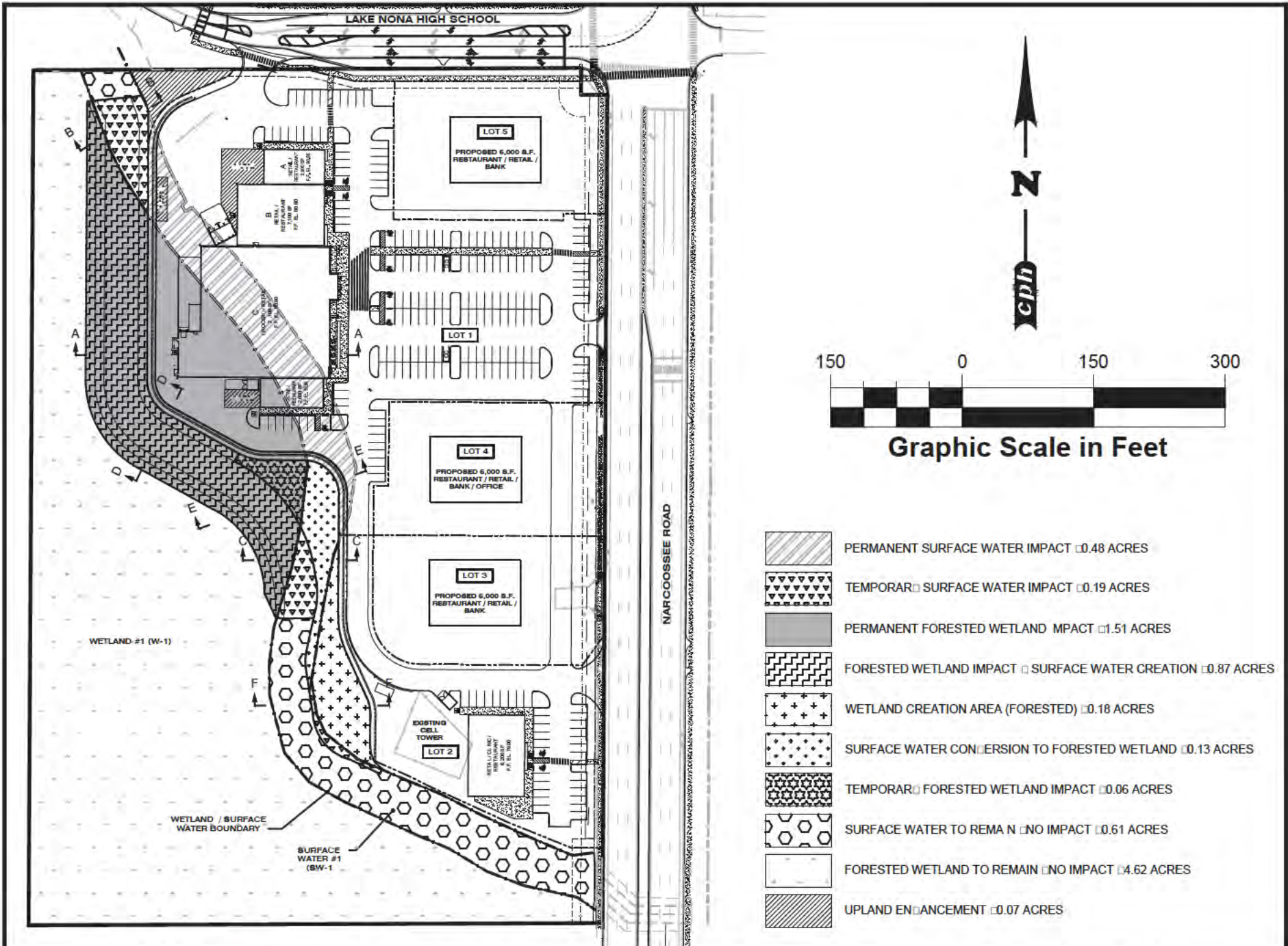






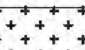
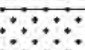
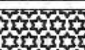
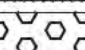
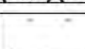

PRELIMINARY VEGETATION AND LAND USE MAP

SHOPPES AT NONA PLACE  
 SECTION 30, TOWNSHIP 24 SOUTH, RANGE 31 EAST  
 COUNTY, FLORIDA

FIGURE  
4





-  PERMANENT SURFACE WATER IMPACT 0.48 ACRES
-  TEMPORARY SURFACE WATER IMPACT 0.19 ACRES
-  PERMANENT FORESTED WETLAND IMPACT 0.51 ACRES
-  FORESTED WETLAND IMPACT / SURFACE WATER CREATION 0.87 ACRES
-  WETLAND CREATION AREA (FORESTED) 0.18 ACRES
-  SURFACE WATER CONVERSION TO FORESTED WETLAND 0.13 ACRES
-  TEMPORARY FORESTED WETLAND IMPACT 0.06 ACRES
-  SURFACE WATER TO REMAIN / NO IMPACT 0.61 ACRES
-  FORESTED WETLAND TO REMAIN / NO IMPACT 4.62 ACRES
-  UPLAND ENHANCEMENT 0.07 ACRES

Designed by:	RNC	Scale:	1" = 150'
Drawn by:	RNC	Date:	3/17/17
Checked by:	LJA	Job No.:	B17201
Approved by:	LJA	©	2017



Plans Prepared By:  
**CPH, Inc.**  
 500 West Fulton St. Sanford, FL 32771  
 Phone: 407.322.6841  
 License:  
 Eng. C.O.A. No. 3215 Arch. Lic. No. AA2600926  
 Survey L.B. No. 7143 Landsc. Lic. No. LC000298

**NADG/BLACKFIN PARTNERS, LLLP**  
**THE SHOPPES AT NONA PLACE**  
 ORANGE COUNTY, FLORIDA

**IMPACT AND MITIGATION MAP**

Sheet No.  
**Fig. 7**

z:\B17201\DWG\Design\Master Plan Files\Master Plan\_IMPACTS.dwg, 4/11/2017 3:34:50 PM, Corporator, Robert C. \_cph - DW And Landscape.slt